



Frequently Asked Questions

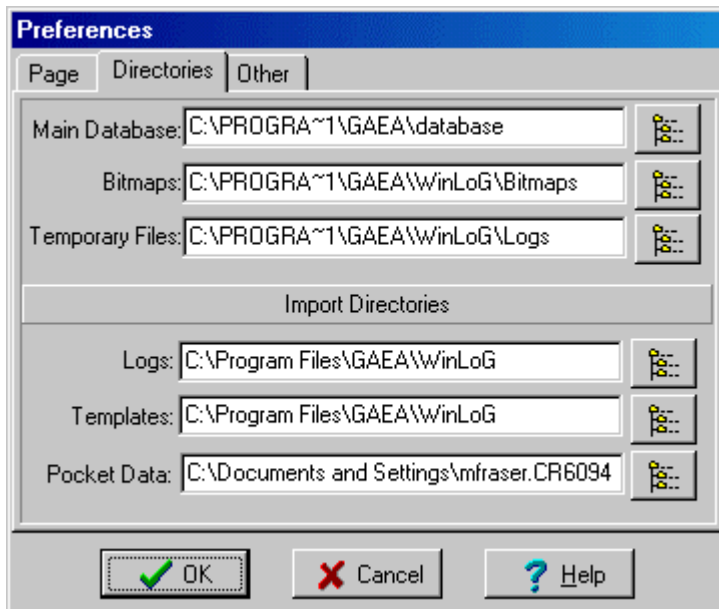
How do I store database files on a server?

At times when there are several users of WinLoG or WinFence in a company it may be beneficial to have the project databases and main database stored on the server. This allows access to project information and proprietary company templates through a central data repository. It is quite easy to accomplish this by editing WinLoG's and WinFence's data storage preferences.

You can do this by following the following procedure.

Step 1: Copy your Database Files To the Server

Usually the main project database is located at the following path "c:\program Files\GAEA\Database" if you used the default directory in the initial installation of WinLoG. However, if you chose another directory for the database it would be indicated in the "Main Database" text box on the WinLoG Preferences form. First, we must move this entire directory over to our server. In general, it is a very good idea to map the database directory on the server to a letter on your hard drive (e.g. "G:").



The files in the "c:\program Files\GAEA\Database" directory should then be copied to the directory that was created on the server (eg. "G:\GAEA"). This places all main database files and templates on the server.

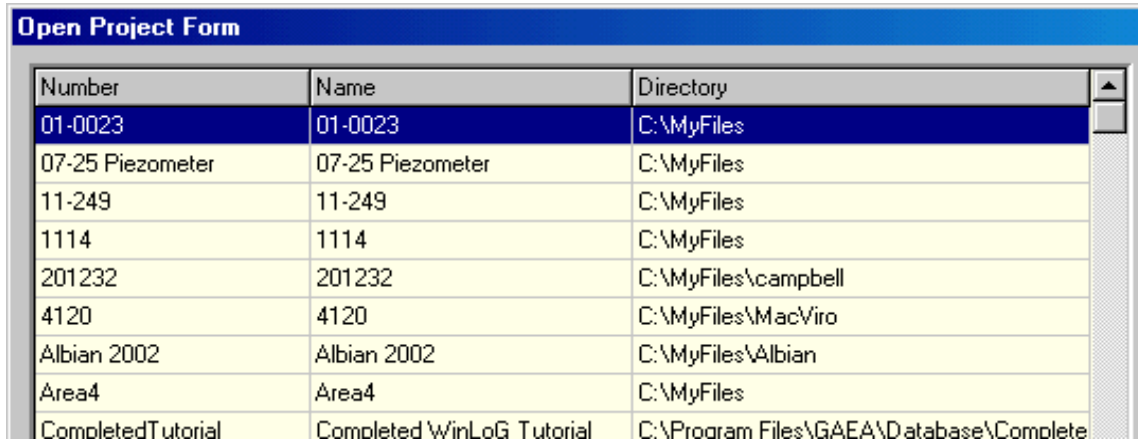
Step 2: Change Preferences to Server Database

Next, we have to change the database preferences in the program to point to the database on the server. Click on File menu, then select the Preferences menu item in either the WinLoG or WinFence program.

This will open the Preferences form. Now change the main database directory to the server directory where you have moved the database files (eg. "G:\GAEA"). Then click "OK" to save the changes. If you do not get an error then you have done it correctly.

Step 3: Move Project Databases to Server

If desired the individual project databases can be moved to the server as well. This will allow all users to have access to the project data. To do this create a subdirectory in the main database directory on the server for the project and then copy the project databases from your computer to this directory.




Number	Name	Directory
01-0023	01-0023	C:\MyFiles
07-25 Piezometer	07-25 Piezometer	C:\MyFiles
11-249	11-249	C:\MyFiles
1114	1114	C:\MyFiles
201232	201232	C:\MyFiles\campbell
4120	4120	C:\MyFiles\MacViro
Albian 2002	Albian 2002	C:\MyFiles\Albian
Area4	Area4	C:\MyFiles
CompletedTutorial	Completed WinLoG Tutorial	C:\Program Files\GAEA\Database\Complete


If you can not remember the directory that the project was stored in, the directory is display on the Open Project form when a project is being opened. The file names of the project databases begin with the Project name and then ends with "winlog.mdb" or "winfence.mdb" (eg. "project1winlog.mdb" and "project1winfence.mdb"). If you are using both the WinLoG and WinFence programs, you should copy both of the database files to the server.

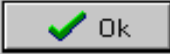


After the project databases have been copied to the server, you need to change the directory shown in the Open Project form for the project. To change the directory select the project and then click on the Edit Directory button.

Import Project

Project ID: 

Project Name:

Directory: 

 Ok  Cancel  Help

If the project is not displayed on the Open Project form, it can be imported into the program using the Import Project menu item from the Projects submenu of the File menu. The Import Project form will be displayed, where you can specify the project database file and name. The easiest way to import a project is to click on the Open File button to the right of the Project ID, then select the project database file you moved to the server. The program will then automatically fill in the project name and directory. When using this method make sure you select the database file that ends with "winlog.mdb" for WinLoG and that ends with "winfence.mdb" for WinFence.