

WinLoG

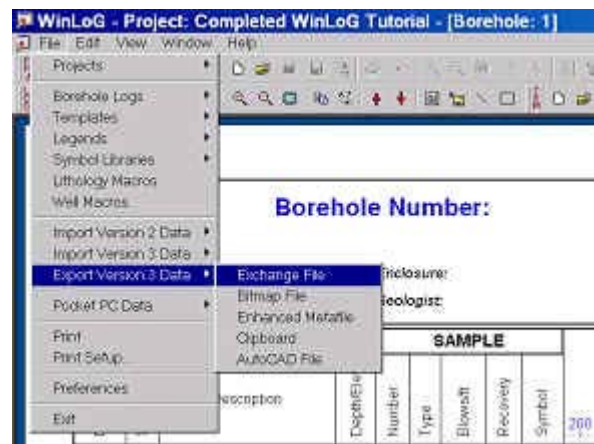
Version 4.0

Frequently Asked Questions

Can WinLoG export logs to Microsoft Word?

WinLoG can export finished full color logs into Microsoft Word. Most of our clients print their logs and manually insert them into their report. WinLoG gives you the ability to email reports to clients and colleagues. No additional programs are needed to view the WinLoG logs.

To export your logs start by clicking on the file menu. Choose Export Version 3 Data. Choose Enhanced Metafile, bitmap or Clipboard. Give the log a name and save it in a directory that you will remember. A popup menu will tell you if the export was successful.



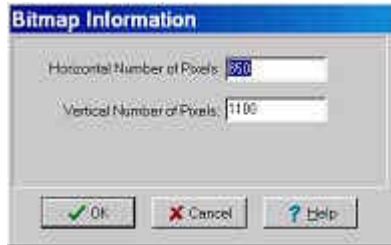
Open Microsoft Word. Select the document you want your logs inserted into. Place your cursor at the correct location. Click on the Insert Menu. Select Picture, From File. Retrieve the saved log from the directory you placed it in. Click insert. The log will be inserted into your document. To resize the image click on it and drag the corners.

To help determine which method of exporting suits your needs I have outlined a few methods below:

Clipboard

Any currently displayed borehole log, template, or legend can be exported to the Windows clipboard. The format used to store the data in the clipboard is similar to a bitmap file. The Bitmap Information form shown below will be displayed. The horizontal and vertical number of pixels determines the resolution used to store the bitmap in the clipboard. The higher the resolution the clearer the picture will be. The number of colors is the same as the current screen resolution.

Bitmap File



Exporting to a bitmap file is the same as exporting to the clipboard, except that the bitmap is stored in a file instead of the clipboard. The file format is a Windows bitmap .BMP file. Any currently displayed log, legend or template can be exported to a bitmap file.

Metafile

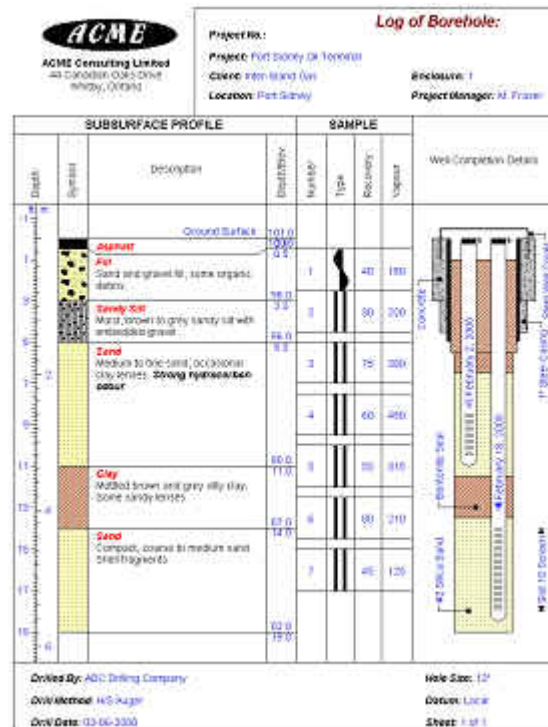
Exporting to an enhanced metafile is the same as exporting to a bitmap file.

Exchange Files

Exchange files are used to transfer borehole logs, templates, and legends between projects or to other companies. The data in these files is stored as ASCII text. Borehole log exchange files have the extension ".lg3", template exchange files have the extension ".tm3", and legend exchange files have the extension ".lgd3". After the data has been exported from another project, it can then be imported into the current project. This method will not import the log into Word.

AutoCAD File

A DXF file is a format designed by AutoCAD to exchange drawing files. The format provides for either ASCII files or binary files. In WinLoG the exchange format used is an ASCII file.



The AutoCAD DXF format does not allow for the exchange of bitmaps or Windows fonts. In addition, the color palettes used can vary depending upon the application. Because of these limitations with the format, the exported logs will not contain any bitmap or font information, and the colors may vary. All of the text in the log will be exported in ROMAN font, and none of the bitmaps used to draw the soil symbols, well seals, and packing, and sample types will be exported.

If you require this information in the exported file, it is recommended that you export the log as a bitmap file or enhanced metafile instead. The bitmap file or enhanced metafile can then be imported into AutoCAD.

Only borehole logs can be exported to DXF file format. Since legends are primarily comprised of, bitmaps there is no facility to export them to DXF format. It is recommended that legends be exported in bitmap or enhanced metafile format and then imported if required. This method will not import the log into Word.