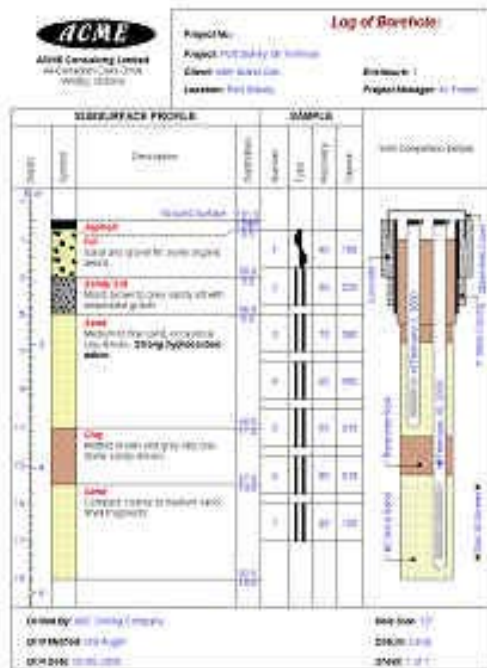


# WinLoG

## Frequently Asked Questions

How do I add a dual completion well in WinLoG?



The easiest way to set up a dual completion well in WinLoG is to use the well completion macros that come with the program.

To use a well macro in your logs you must first add a Well Type 3 column to the template you are using to create the log.

Well Type 3 columns are a relatively new feature that was added to WinLoG Version 3 to facilitate the representation of complicated well details including casings, screens, covers, caps, and other miscellaneous fittings. This type of well column can contain multiple piezometers, casing and screens with variable diameters, annotations, and water depths.

A good example of a template that uses a Well Type 3 Column is the "Environmental - CMT" Template. In this example (contained in the "Samples" project) a Well Type 3 Column is used to create a dual completion well.

### Step 1 Edit the Template

You can add a Well Type 3 column using the following procedure. First open the template you would like to add the Well Type 3 column to by clicking on "File" menu, then "Templates" submenu and then "Open Templates" menu item. This opens up the Open Templates Form.

Then select the template you wish to add the Well Column to and click "OK".

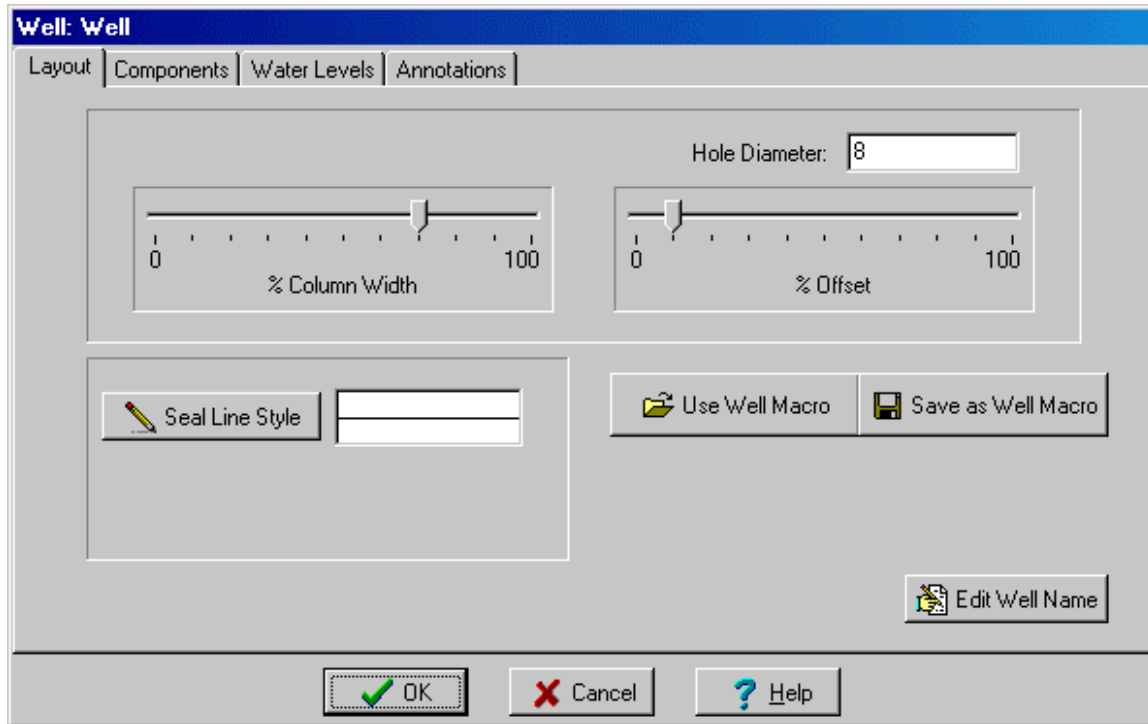
Then select the column that you would like to use as a Well Column by clicking on it. Clicking on the column opens the Columns form. On the Columns form change the Title and Name to "Well Completion Details" and the Type of Column to "Well Type 3". Click "OK" to save the changes. Then save the changes to the template and close the template.

**Step 2 Add a Dual Completion Well to the Log**

Once you have saved the template you can use the template to create a borehole with a **"Dual Completion Well"** on it.

Open a "New" borehole log, by clicking first on "File" menu, then "Borehole Logs" submenu, and then "New Borehole Log" menu item. Then select the template you have just edited and saved. This should create a new borehole log and prompt you for the log name. Once the log is open, click on the Well completion column. This will open the "Well Completion Details" form. Click on the "Use Well Macro" button.

After this is done select "Dual Piezometer" from the list of macros that appears. Then click "OK" and a Dual completion well should appear on your log.



### **If Dual Completion Well is not in the list of Macros**

If the "dual completion well" doesn't appear in the macro list then follow the procedure below to add it.

Borehole E101 contained in the Samples Project that ships with Winlog contains an example of a dual completion well. Open the Samples Project with Winlog, and then open Borehole E101. To open this Borehole, and for that matter all the Sample boreholes, first click on "File" menu, then click on "Projects" submenu, and then select "Open Projects" menu item. This opens up the "Open Project Form". Then select "Samples" from the project list and click "OK".

After this, open borehole E101 by clicking "File" menu, then the "Boreholes" submenu, and then the "Open Boreholes" menu item. Once the "Open Boreholes" forms appears select **E101** from the list.

You will see a "Dual Completion Well" at the right side of the log. Click on this column. This should open up the Well Form. Click on save as macro. This will open the "Well Macro Name" form. Give the new macro a name (i.e. Dual Piezometer) and click "OK". This should save the Dual Piezometer to the macro list and it can now be used in the same manner as describe above.

