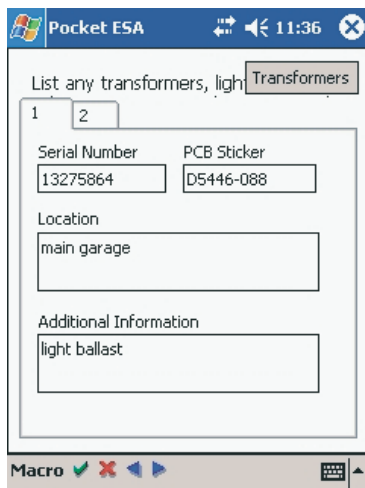
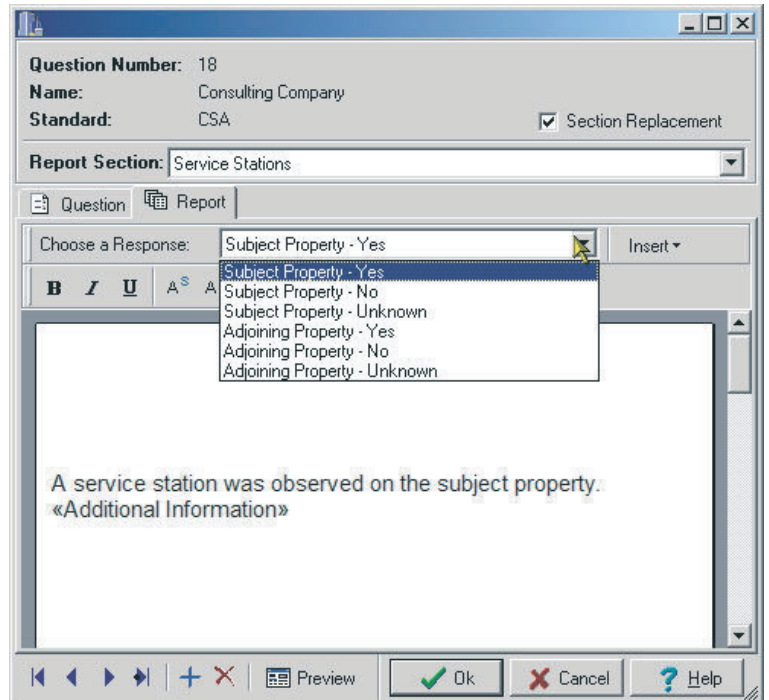


Features

- ★ Significantly reduces time to create final report.
- ★ Produces a consistent, high-quality report.
- ★ Eliminates the possibility of cut and paste errors that occur when modifying old reports.
- ★ Prompts users to enter complete information and recommendations.
- ★ Collects answers to pre-designed questions in a template provided by GAEA.
- ★ More templates are always being added.
- ★ Generates merged final report that can be edited in Microsoft Word format.
- ★ Can insert entire paragraphs based on simple yes or no questions.
- ★ Reports can be generated to follow any standard, including ASTM and CSA.
- ★ In addition to your answers to the questionnaire, photos and third-party reports can also be integrated into the final report.



- ★ Default answers to common questions.
- ★ The answers to questions are tracked, and a list of unanswered questions can be displayed.
- ★ Microsoft Access database management system. Microsoft Access is not required to run program.
- ★ Network compatible and able to track projects over a network.
- ★ Report templates are created and edited in Microsoft Word.
- ★ There can be an unlimited number of reports and projects.

- ★ Text macros can be created on the desktop and used to rapidly enter common answers.
- ★ Text macros are sorted into sections for easier selection.
- ★ Merged report can be immediately opened in Word.
- ★ The data can be collected on a Pocket PC, a laptop, or paper form.
- ★ The data can be uploaded from the Pocket PC one survey at a time or an entire project at a time.

