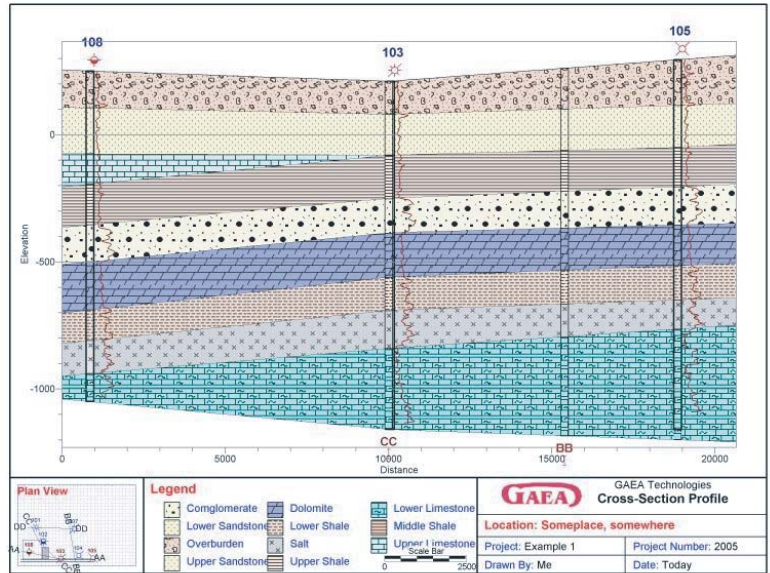


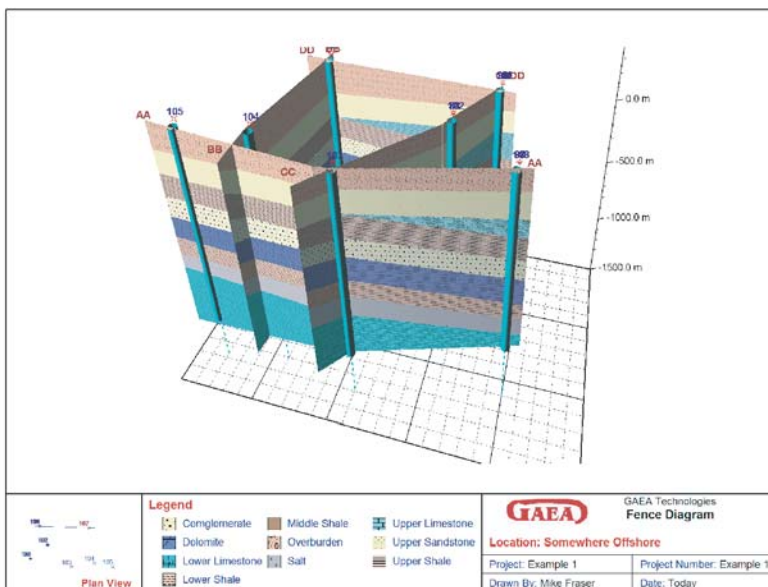


# Features

- ★ Fence diagrams can be generated, displayed and printed in 3D.
- ★ Strata in cross-sections can be automatically generated by the program's built-in intelligence.
- ★ Position of the user and light source can be dynamically moved in the 3D fence diagram.
- ★ Graphical Information System (GIS) for displaying and picking boreholes and cross-sections in WinLoG and Winfence. GIS can also display site features and import AutoCAD files.
- ★ Intersecting cross-sections can be displayed on a cross-section.
- ★ Intersecting cross-sections can be used when automatically generating a new cross-section.
- ★ Deviated boreholes can be displayed on a cross-section.



- ★ Multiple water levels can be drawn on the cross-section. The water level can be drawn automatically using the water levels stored in WinLoG.
- ★ Legend and header of the fence diagram can be fully customized.
- ★ Title bar can contain any number and type of data.
- ★ Legend can contain lithologic symbols with standard or custom lithology descriptions.
- ★ Cross-section can contain a location map as an inset, showing the borehole locations and the pathline.
- ★ Boundaries can be snapped to other layers, faults or intrusions.
- ★ Layers can contain multiple segments and may be discontinuous.
- ★ Points defining strata boundaries can be graphically edited and deleted.
- ★ Program can automatically update itself to the most recent version.
- ★ Program has online technical support, where it can email technical support all relevant files and information if there is a problem.



- ★ All of the databases are automatically backed up and can be easily restored.
- ★ Projects and templates can have passwords assigned to control usage.
- ★ Data is stored in a Microsoft Access database.
- ★ An unlimited number of lithologic symbols can be used to represent different horizons, more than 100 are supplied with the program.
- ★ Bitmaps, lines, text, and rectangles can be placed anywhere on the cross-section.
- ★ Cross-sections can be exported to the clipboard, bitmap files or metafiles. Cross-sections can contain an unlimited number of boreholes and well logs.
- ★ Cross-sections can contain an unlimited number of layers, lenses, intrusions, faults, and alteration zones.