

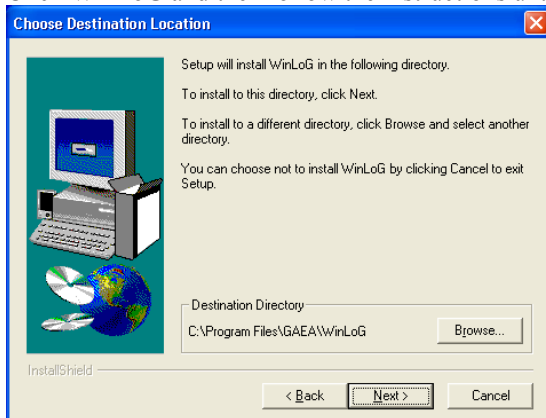
NETWORK INSTALLATION

STEP 1 – INSTALL THE SOFTWARE ON THE SERVER

Here is an example of how to install the networked version of WinLoG on a server.



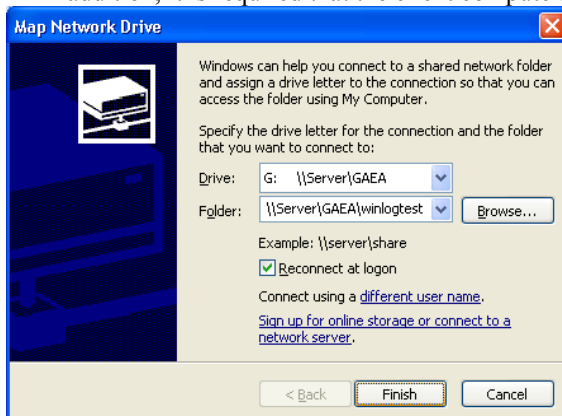
Click WinLoG and then follow the instructions until you get to this page.



Click Browse, to choose a directory on the server to install the database into.

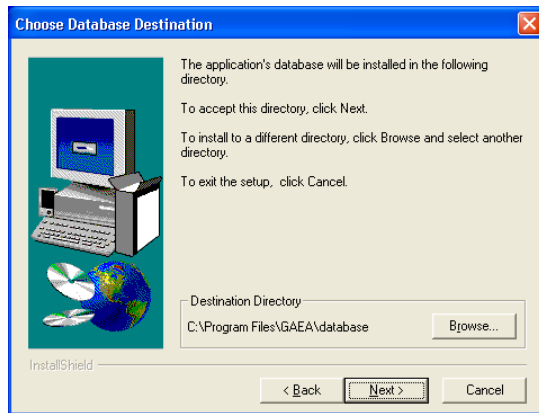
The directory you install to must be a shared directory that all WinLoG users will have read and write access on.

** In addition, it is required that the client computers have the shared drive mapped to the same drive letter.



Now click Network to select a directory on the network to install the database to. This is very important since it is the directory where the “winlog4network.lic” file will be stored once the networked version is registered. Click browse to select the drive and director. Then click finish.

Now simply follow the rest of the installation process by clicking next or “Ok” each time.



STEP 2 – REGISTER THE SOFTWARE ON THE SERVER

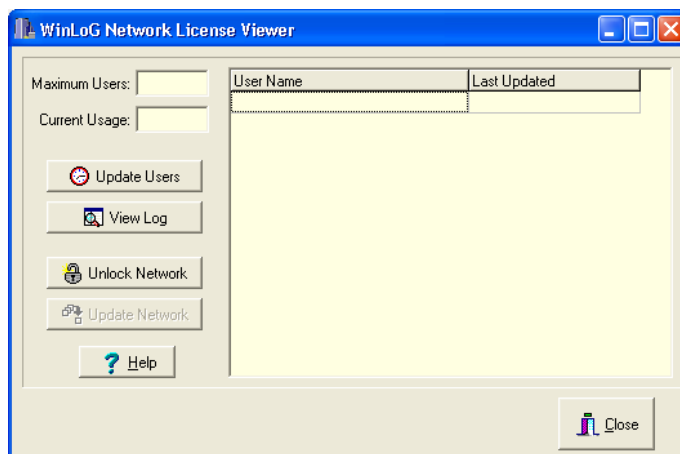
The software has to then be registered by running the network monitor application.

Running the Network Monitor

Once the installation is complete register the software on the server but running network monitor.

- click **Start**
- then click **All Programs**,
- then click **Program ID** (ie WinLoG 4, or WinFence, etc)
- then click **Network Monitor**.

This should open up a form similar to the one below....



Then click **Unlock Network** and the form below should show up.

Register Network License

To register the network license and obtain unlock codes, contact GAEA with the serial numbers shown below.

Network Serial Number: Network Unlock Code:

Maximum Number of Users: User Unlock Code:

Click Obtain **Unlock Code** to get you unlock code. Once you have gotten you unlock code from GAEA enter the Network unlock code and the User Unlock Code and click “Ok”.

If the unlock code is successful then you should see a screen similar to the one below showing a network with 5 seats and one current user logged on.

WinLoG Network License Viewer

Maximum Users:
Current Usage:

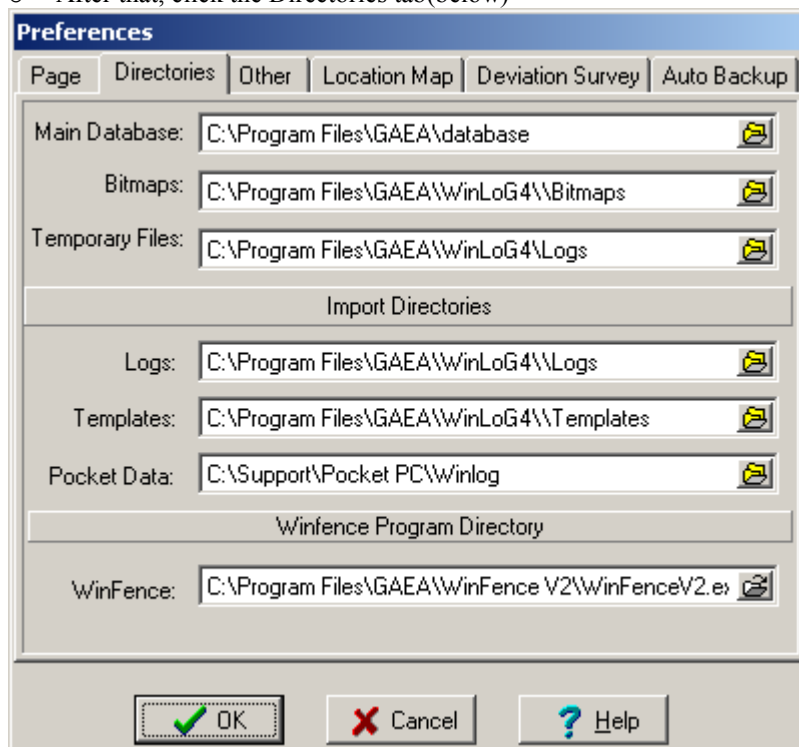
User Name	Last Updated
SD3-SD3	5/21/2002 2:28:21 PM

STEP 3 - CLIENT INSTALLATION

Once the server is setup, you have to install the software on all the client computers that will be using the Software.

Procedure:

- Run the install script on the client computers and accept all the defaults when running the installation.
- After the installation is completed successfully, open WinLoG on the client.
- Edit the Main database preferences
 - Click File
 - Click Preferences. The Preferences form should now open.
 - After that, click the Directories tab(below)

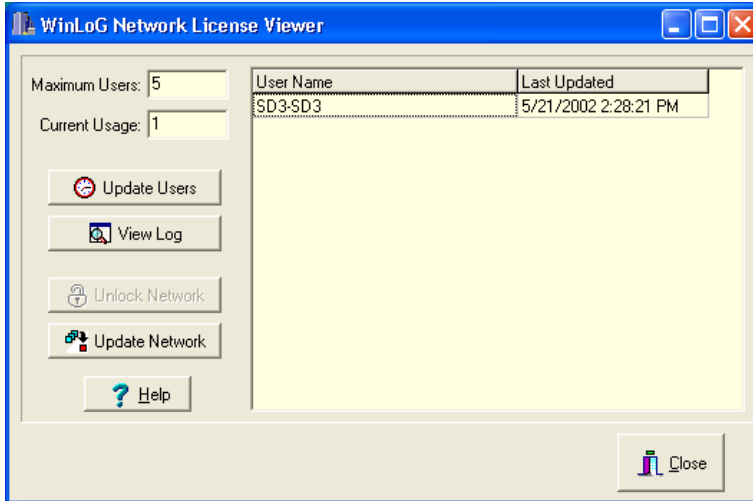


- Then Edit the Main database directory and point it to the shared database directory on the server.(**G:\server\winlog\winlogtest** in this example).

STEP 4- FINAL CHECK OF SETUP

Now you can test the network setup by running the network monitor on the server while the application is Running on your client computer.

Run the Network Monitor on the server and you should now see something like the following.



In this example, one user is logged onto the WinLoG database. In addition, any logs that are printed should now be without the "Winlog Demo" watermark.