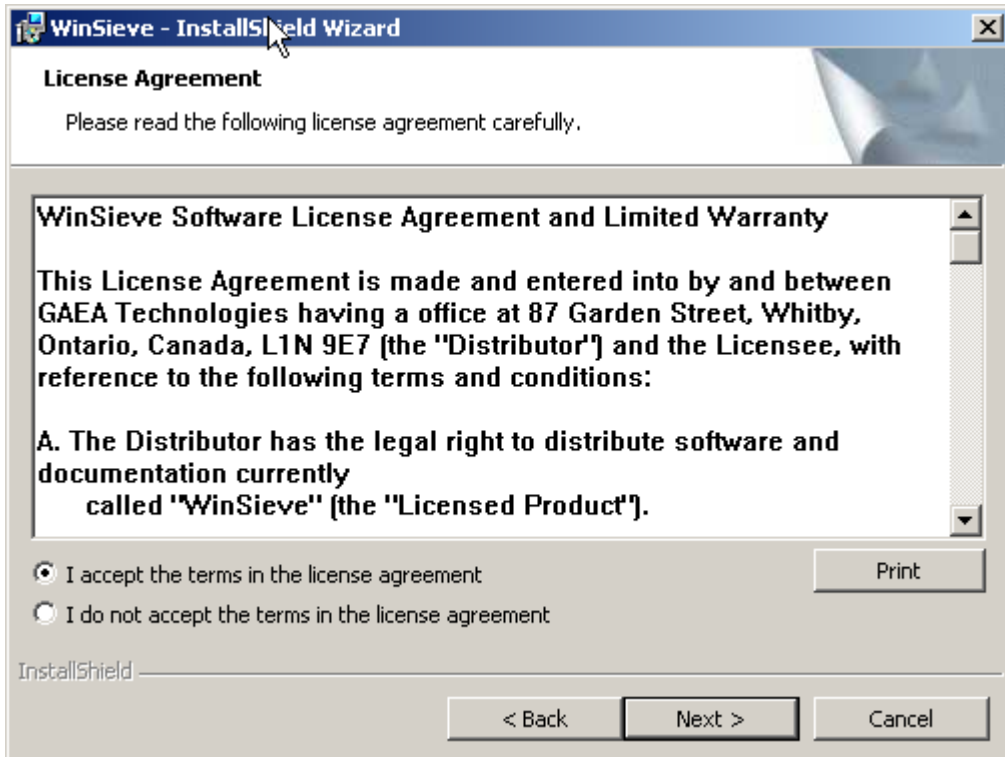


INSTALLING WINSIEVE ON A CLIENT COMPUTER (Network Version of WinSieve)

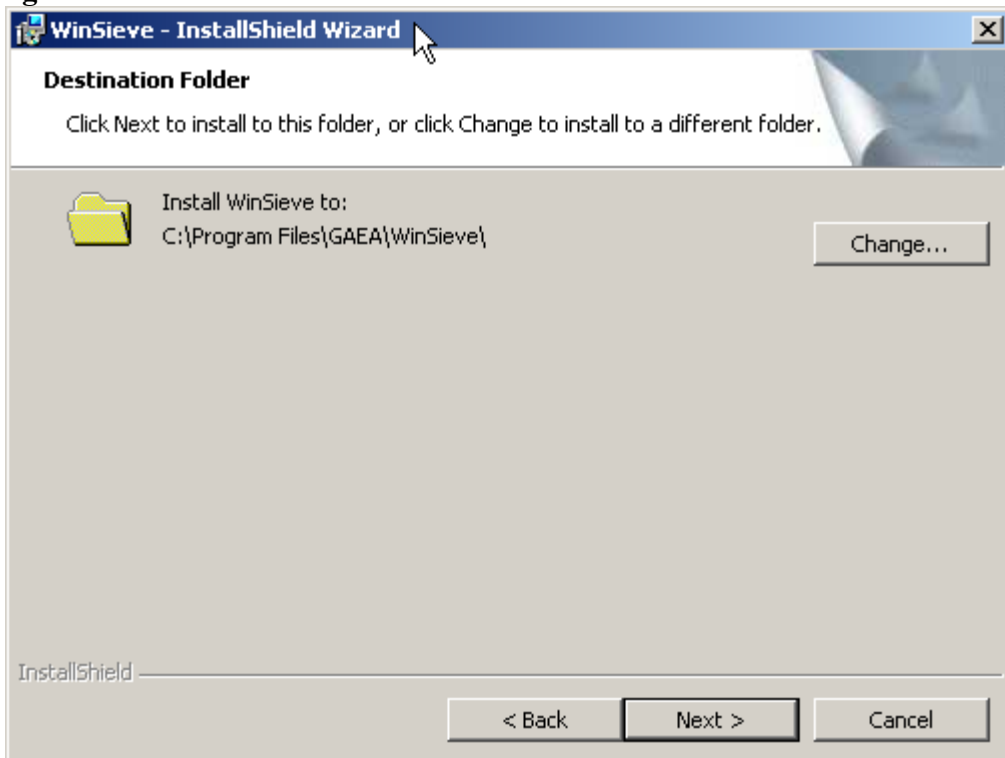
Step 1- Install the Software



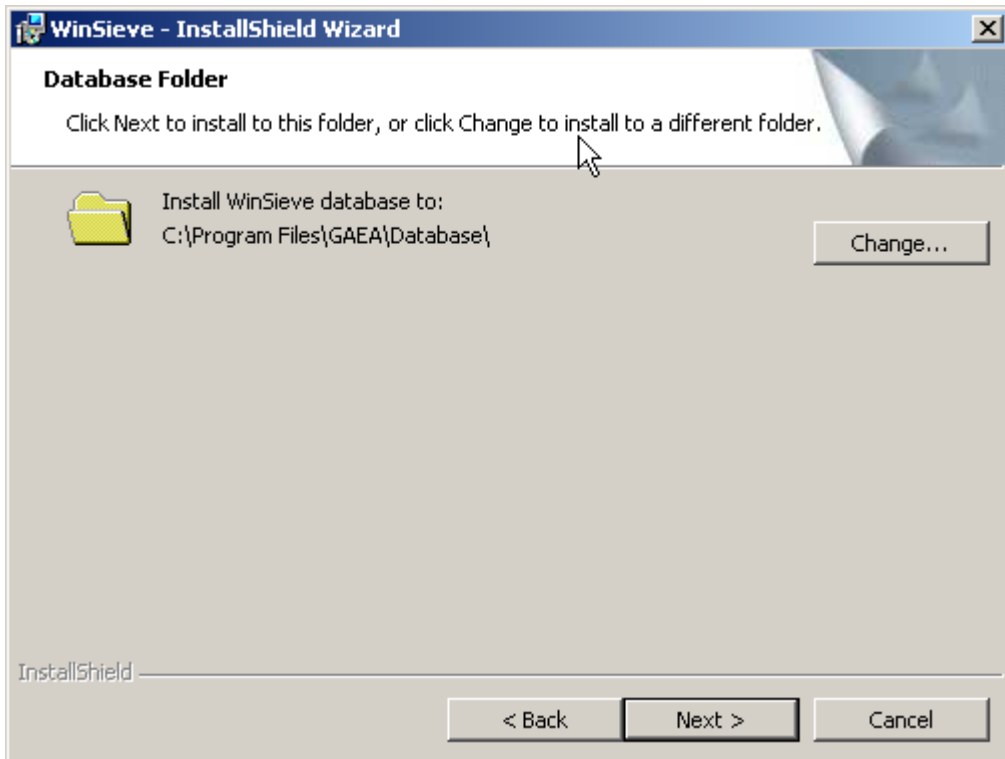
Click **Next**



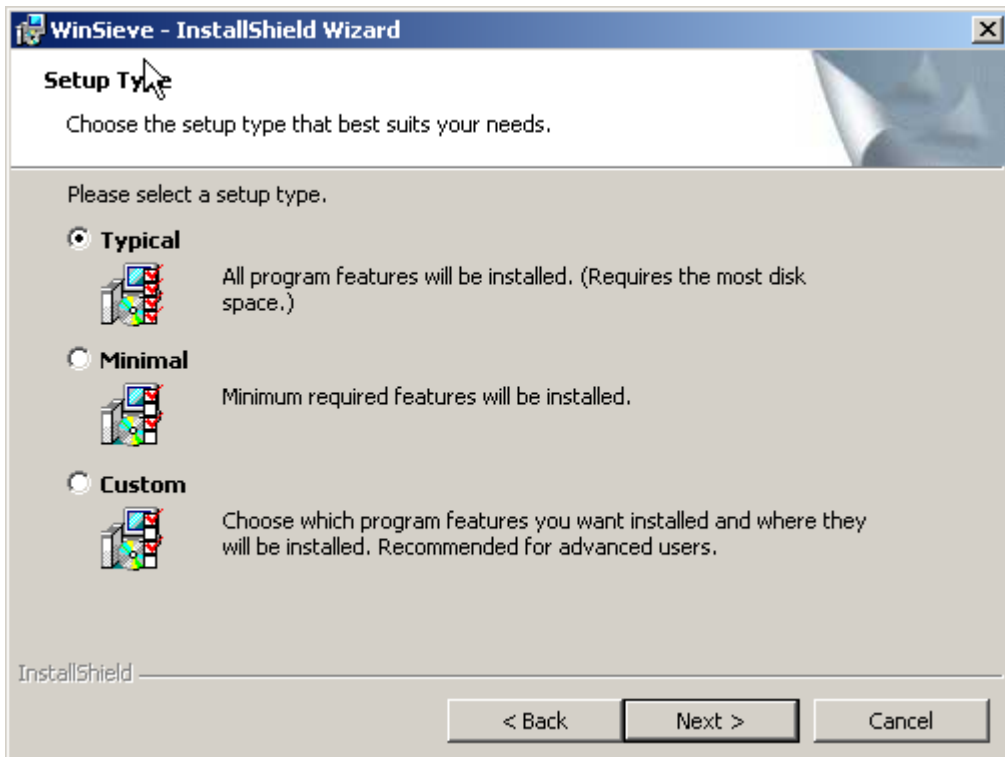
Read the license agreement. Then if you agree to it check off **“I accept the terms in the license agreement”**. Then click **Next**.



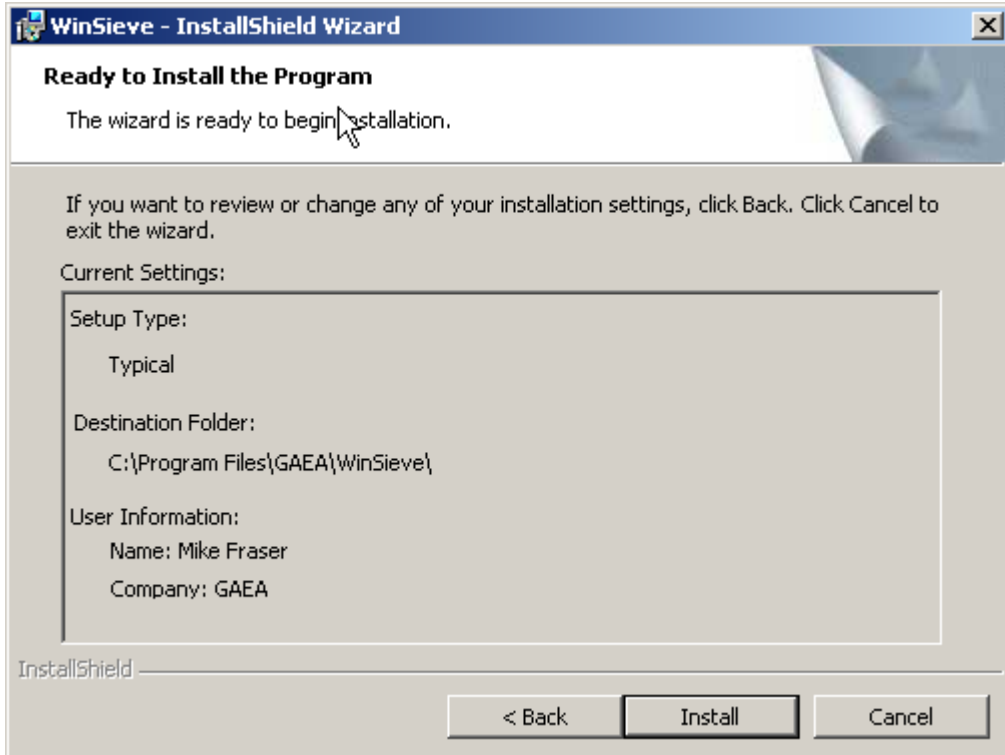
The destination folder form allows the user to select the directory into which WinSieve should be installed. In general, it is best that you use the default. Then click **Next**.



The database folder form allows the user to select the directory into which WinSieve database should be installed. Do not change this directory for the network version of WinSieve. Then click **Next**.



Select Typical, then click **Next**.

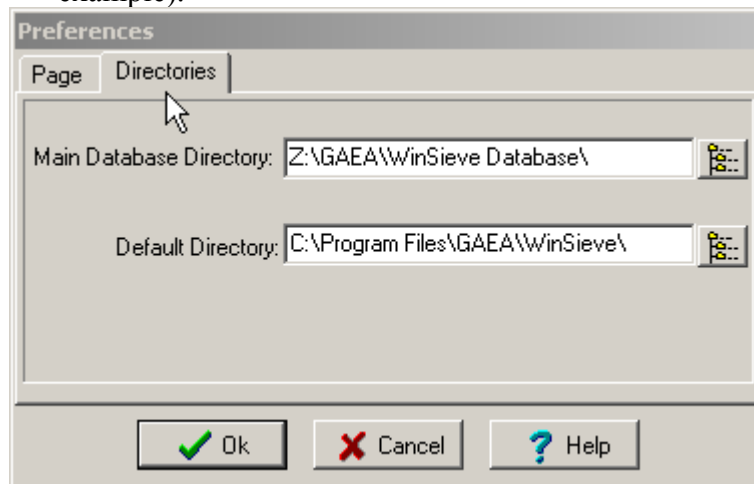


Then click **Install**.

When the final dialog shows up, click **Finish** to complete the installation.

STEP 2 – Change the main database directory

- After the installation successfully completes, open WinSieve on the client computer
- Edit the Main database preferences
 - Click **File**
 - Click **Preferences**. The Preferences form should now open.
 - After that, click the **Directories** tab
 - Edit the Main database directory (shown below) and point it to the shared database directory on the server (**Z:\gaea\WinSieve Database** in this example).



Then click Ok to save the changes.

Now close WinSieve and re-open to determine if it logs onto the Network properly.